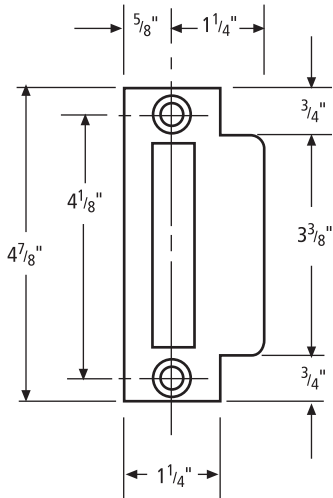


# PRODUCT DATA

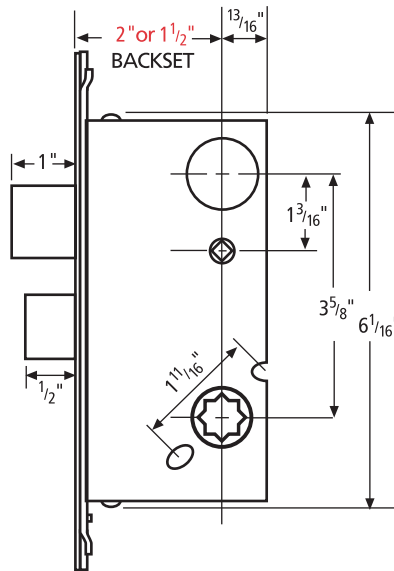
## 1½" and 2" Narrow Backset Mortise Locks

Available with two backset options – 1½" or 2". Please specify when ordering. Available for levers only. Specify right hand or left hand. Not reversible.

Same strike supplied with both 1½" & 2" b.s. locks.



Extended lip strikes are available.



DRAWINGS NOT TO SCALE

### Solid Brass Backplates

|              |                                |
|--------------|--------------------------------|
| 60000 Series | 1 17/16" x 1 3/4" x 1/4" proj. |
| 63000 Series | 10 1/8" x 1 3/4" x 3/8" proj.  |
| 64000 Series | 8 1/4" x 2" x 1/4" proj.       |
| 65000 Series | 9 1/2" x 1 9/16" x 3/8" proj.  |

Made in U.S.A.

**Backset:** Available with two backset options 1½" and 2". Please specify backset on order.

**Case:** Heavy gauge plated steel.

- 1½" b.s.: 6 1/16" x 2 3/16" x 3/4"
- 2" b.s.: 6 1/16" x 2 13/16" x 3/4"

Accommodates thru-bolted roses.

**Front:** Adjustable armored steel front, with 8" x 1 1/4" solid brass faceplate for both bodies. Finished to match trim.

**Latchbolt:** Solid brass with ½" x 1" x ½" throw.

**Deadbolt:** Solid brass with ½" x ¾" x 1" throw.

**Strike:** Solid brass curved lip strike. 4 7/8" x 1 1/4" x lip 1 1/4" to center. Finished to match trim. Dust box supplied as standard. Extended lip strikes are available.

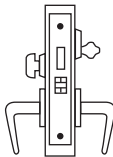
**Cylinder:** Solid brass from bar stock. Made in USA. Schlage "C" keyway supplied as a standard, with two Omnia brass keys. When applicable, cylinder collars are supplied with compression spring. Available on special order in a variety of other keyways and key combinations.

**Keying:** Specify Keyed Alike (KA) when needed. Master / Grand / Construction Keying available at additional cost.

### ENTRY — B

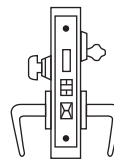
*Shipped Standard*

Latchbolt by lever either side. Deadbolt by key outside and turnpiece inside. No locking rocker switch; hubs always operable.



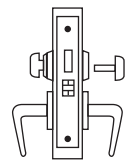
### SINGLE CYLINDER — A

Latchbolt by lever either side except when outside lever is locked by the rocker switch in the front; then by key outside, lever inside. Deadbolt by key outside and turnpiece inside.



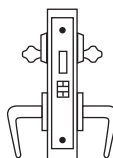
### PRIVACY — L:

Latchbolt by lever either side. Deadbolt by turnpiece inside and emergency key outside.



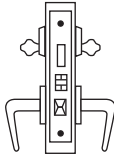
### ENTRY DOUBLE CYLINDER — BAC

Latchbolt by lever either side. Deadbolt by key either side. No locking rocker switch; hubs always operable.



### DOUBLE CYLINDER — AC

Latchbolt by lever either side except when the outside lever is locked by the rocker switch in the front; then by key outside, lever inside. Deadbolt by key either side.



### PASSAGE — N

Latchbolt by lever either side.

